

ACADEMIC YEAR 2023 – 2024

Program	Year	Semester	Paper
DEO	1	1	Midterm

MODULE NAME:	SHIPS, SHIP ROUTINES AND CONSTRUCTION
---------------------	--

MODULE CODE:	DSEAM I	EXAM DATE:	
---------------------	----------------	-------------------	--

TEACHER'S NAME:	ARIFE TUGSAN ISIACIK COLAK	DURATION:	80 Min
------------------------	-----------------------------------	------------------	---------------

Questions to be answered on:	Allowed requirements	Number of pages
Space provided on the question paper	Pen, Pencil & Calculator	(Incl. Cover Page): 5

Points of Attention:

- For each question, the maximum earned points are mentioned between brackets at the end of each question.
- Write very clearly! Answers that are not readable are not marked and do not get points!
- Make sure your answers are written to the point.
- All answers should be written **in English**.
- Write all the answers **in BLUE or BLACK pen only (NO PENCIL)**.
- Answer written in **PENCIL** will not be marked.
- Use the **pencil** only for **diagrams & graphs & drawings**.
- Show all the calculation steps in the given space.
- When finished submit the question paper, together with the answer scripts and the signed cover page to the invigilator.
- Any cheating/copying may result in an instant failing of the examination.

FINAL MARKS

STUDENT NAME:	
----------------------	--

STUDENT ID:	
--------------------	--

	40
	10

Number of answer scripts:

Invigilator:

Student's signature:

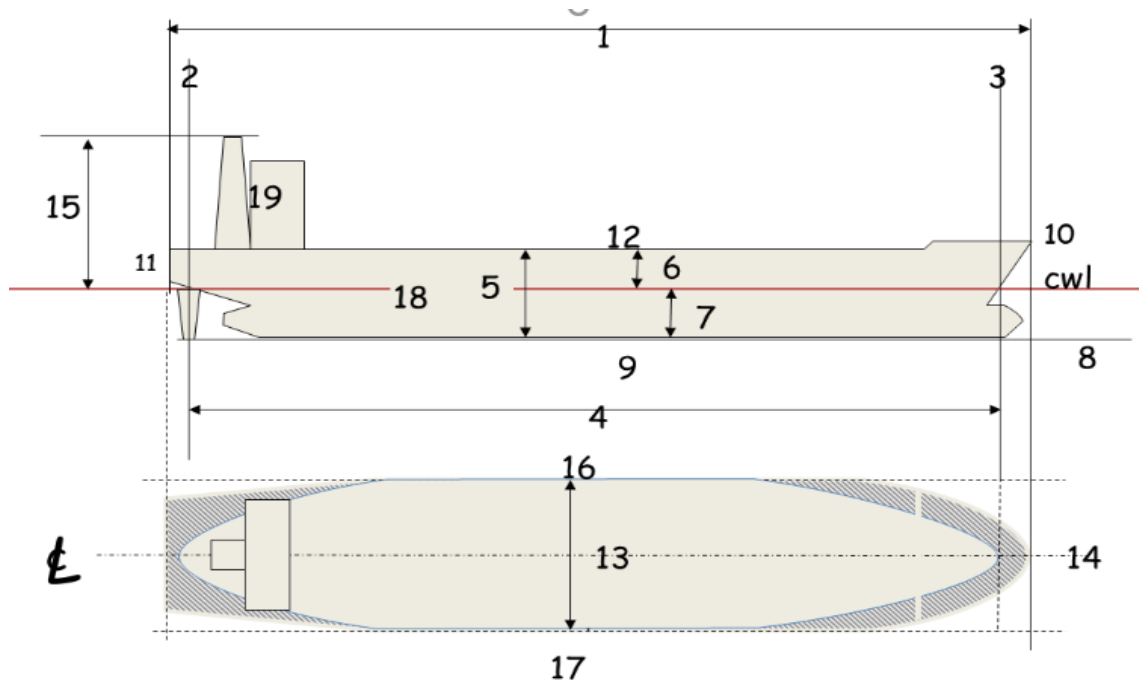
Time of receipt:

ANSWER ALL QUESTIONS

Question 1: Draw the shipboard organization (2 mark), explain Chief Officer responsibilities on board with (3 mark).

Question 2: Write the systems which Chief engineer and his team are responsible for keeping the machinery maintained and operational. (4)

Question 3: Write ship's parts and dimensions: (10 -Each definition placement is 0.5 mark)



1-	11-
2-	12-
3-	13-
4-	14-
5-	15-
6-	16-
7-	17-
8-	18-
9-	19-
10-	20- Show Ballast Tanks

Question 4: Categorize cargo ships as bulk and non- bulk carriers.(6)

Question 5: Draught at the stem (Tfwd): Vertical distance between the water line and the underside of the keel, as measured on the(1)

Draught at the stern (Ta): The vertical distance between the water line and the underside of the keel as measured from the(1)

The difference between the draught at the stem and the draught at the stern is(1)

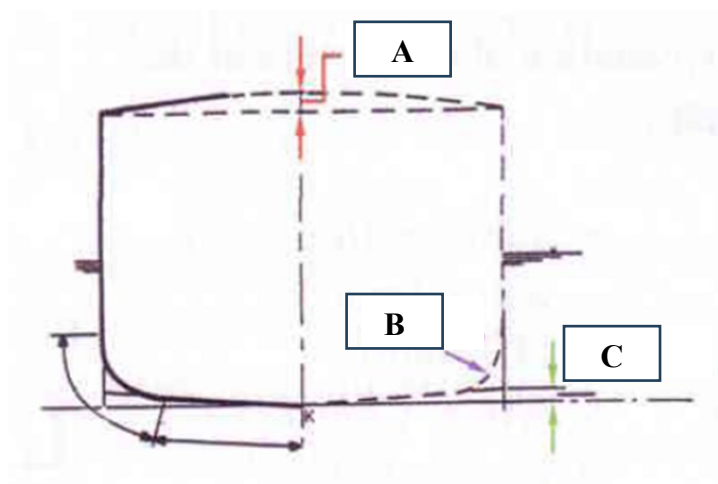
Question 6:

Down and trimmed by the head. :(2)

Down and trimmed by the stern. :(2)

On an even keel, in proper trim. :(2)

Question 7: Write the correct answer for A, B and C. (Each is 1 mark)



9. Explain the below definitions (Each definition is 1 mark)

- a. Deadweight
- b. Displacement
- c. Lightship

