

ACADEMIC YEAR 2023 – 2024

Program	Year	Semester	Paper
DO	1	1	Main
MODULE NAME:	Deck watch & collision regulations 1		

MODULE CODE:	DWATCH-I	EXAM DATE:	31/12/2023
--------------	----------	------------	------------

TEACHER'S NAME:	Dr Capt. Tugsan	DURATION:	90 Min
-----------------	-----------------	-----------	--------

Questions to be answered on:	Allowed requirements	Number of pages
Space provided on the question paper	Pen	(Incl. Cover Page): 9

Points of Attention:

- For each question, the maximum earned points are mentioned between brackets at the end of each question.
- Make sure your answers are written to the point.
- All answers should be written in English.
- Student or Students will get ZERO mark for any cheating/copying from other students, the Internet, the Books, class lecture file or any other sources and will result in an instant failing of the addressed examination.
- The total time of the exam, which is included downloading, answering the questions and uploading the file is mentioned in the Duration cell of the cover page.
- Students should not forget to write their names and their ID numbers on the addressed sheets.

FINAL MARKS

STUDENT NAME:	
---------------	--

STUDENT ID:	
-------------	--

	40
	10

Number of answer scripts:

Invigilator:

Student's signature:

Time of receipt:

Answer all questions:

Question 1

(Total 6 marks)

You are acting as a third officer onboard a tanker.

You will observe a vessel on your Port side with a distance of 8 nm.

- i- How do you determine if there is a risk of collision between two vessels (**Rule 7**)?

(3 marks)

a _____

b _____

c _____

- ii- To determine if there is a risk of collision, you shall use all available means. Can you mention three examples of available means in the bridge? **(3 marks)**

a _____

b _____

c _____

Question 2

(2 marks)



Source: Bridge Simulator

You are a cadet onboard a containership, and you must carry out an appropriate lookout and report to the officer of the watch.

You observe the above vessel **45 degrees on your Port bow**.

How do you report the sighting of the above vessel? (Use the **POINT** technique)

Question 3

(Total 5 marks)

i-Give two examples of the situations when a vessel becomes "**restricted in her ability to maneuver**."

(2 marks)

a _____

b _____

ii-Explain what is meant by "**Vessel underway**" in the Rules.

(3 marks)

a _____

b _____

c _____

Question 4

(2 marks)

You are the Officer in charge of a 270 meters container vessel proceeding in a narrow channel. There is a sailing vessel on your starboard bow in a range of 1.5 nm away.

According to **rule 9**, which statement is true:

- a. The container vessel shall not impede the sailing vessel.
- b. Both vessels have to turn course to starboard.
- c. The sailing vessel shall not impede the container vessel.
- d. Both vessels have to reduce speed.

Question 5

(Total 5 marks)

You are the Third officer on a cargo vessel underway, Proceeding to Hamburg (Germany), navigating in a Traffic Separation Scheme.

The vessel's speed is eleven knots, and the range of visibility is approximately nine nautical miles.

According to rule 6, the safe speed depends on many factors, for example:
"at night, the presence of background lights such as from shore lights".

1. What are three (3) more factors that the safe speed depends on? **(3 marks)**

a. _____

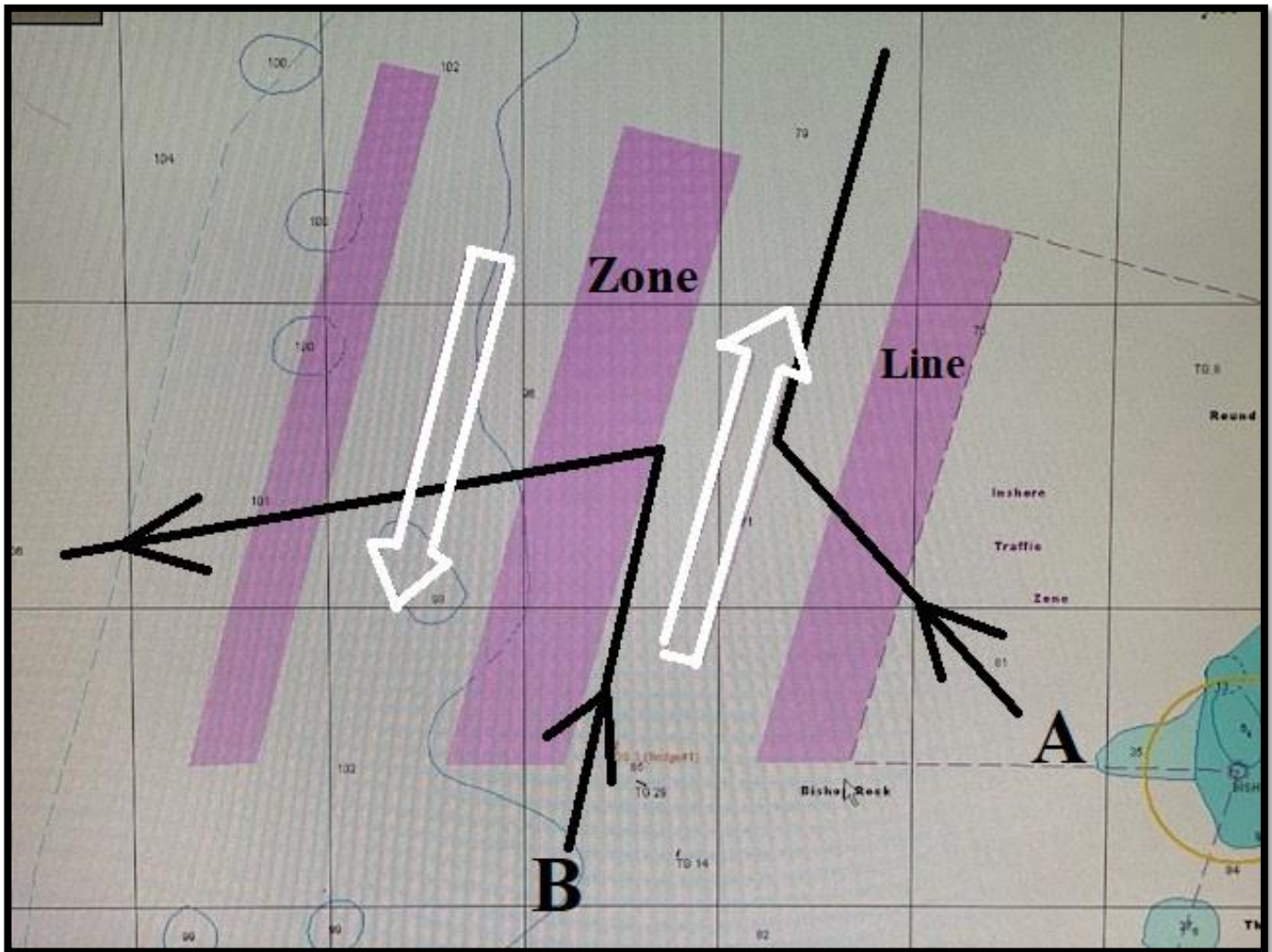
b. _____

c. _____

2. A cargo vessel is a power-driven vessel.
What is the meaning of the definition “**power-driven vessel**” in rule three? **(2 marks)**

Question 6

(Total 6 marks)



Source: Bridge Simulator

- Is the track of Vessel “A” (PDV 100m) to the next “Port” **right or wrong**?
(2 marks)
- Is the course of Vessel “B” (PDV 90 m) to the next “Port” **right or wrong**?
(2 marks)
- Under which circumstances a vessel may enter a Separation zone? (two cases) (2 marks)

.....

.....

.....

Question 7

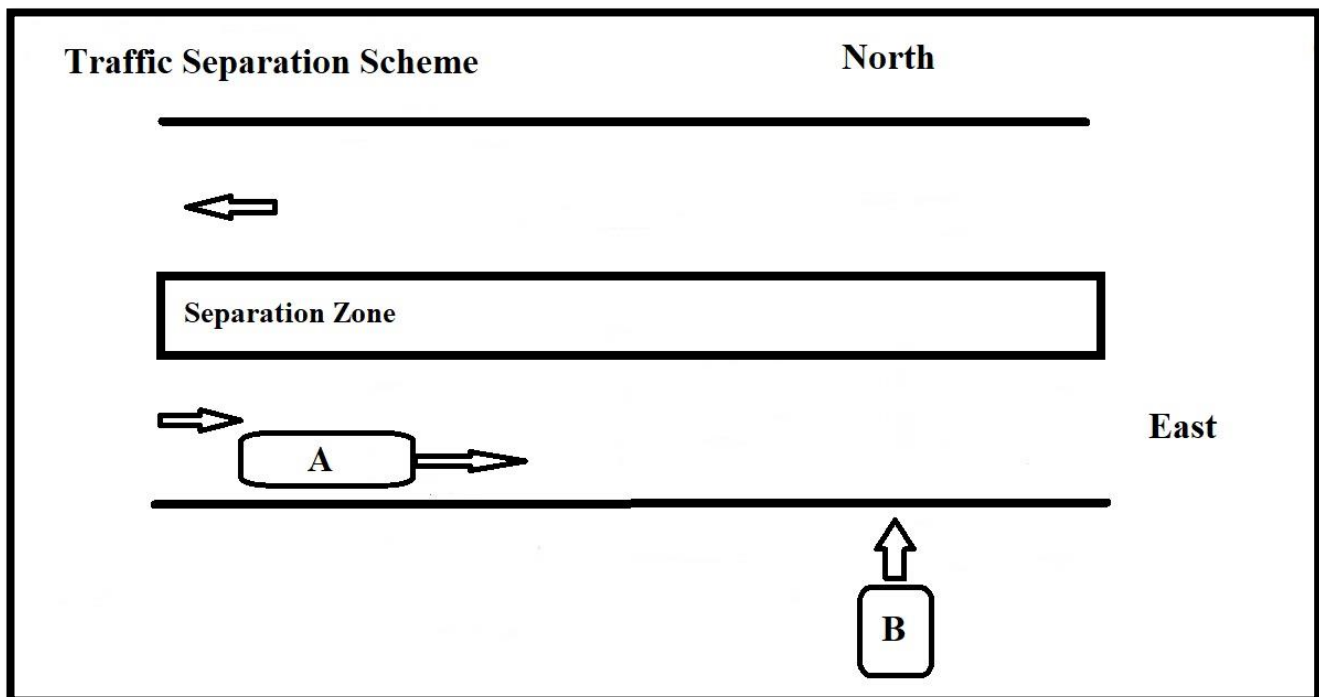
(Total 4 marks)

Analysis : “good visibility”/ “In Traffic Separation Scheme”

You are onboard Vessel (A) and going East. Vessel “B” is on the Starboard side of Vessel “A”.

Vessel (B) is going to cross the Traffic Separation Scheme at right angle. (Going North)

Assessing the situation in the following case indicates that three (3) compass bearings taken, **did Not change appreciably and vessels are approaching (range is reducing):**



Source: Lecture Notes

Vessel A	= Power-driven		Speed = 11 knots
Vessel B	= Power-driven		Speed = 14 knots

- a. What is your responsibility as Officer of Watch (OOW) of vessel "A", **when two vessels are seven miles from each other?** Mention also which rule applies to vessel A in the above situation? **(2 marks)**

- b. Explain the most important responsibilities for vessel “B” at this stage.

(2 marks)

Question 8

(Total 4 marks)

Analysis: good visibility

You are the officer of the watch on board a Tanker. It is 10:00 hours (in the morning) and you **observe** the **below vessel** (Vessel “B”) **exactly ahead** of you.

Assessing the situation in the following case indicates that three compass bearings taken, **did not change appreciably and the range between two vessels is reducing.**



Source: Bridge Simulator

- a. Explain **your** duty to avoid collision when the range is seven nautical miles. **(2 marks)**

- b. What is the responsibility of vessel “B” to avoid the collision? **(2 marks)**

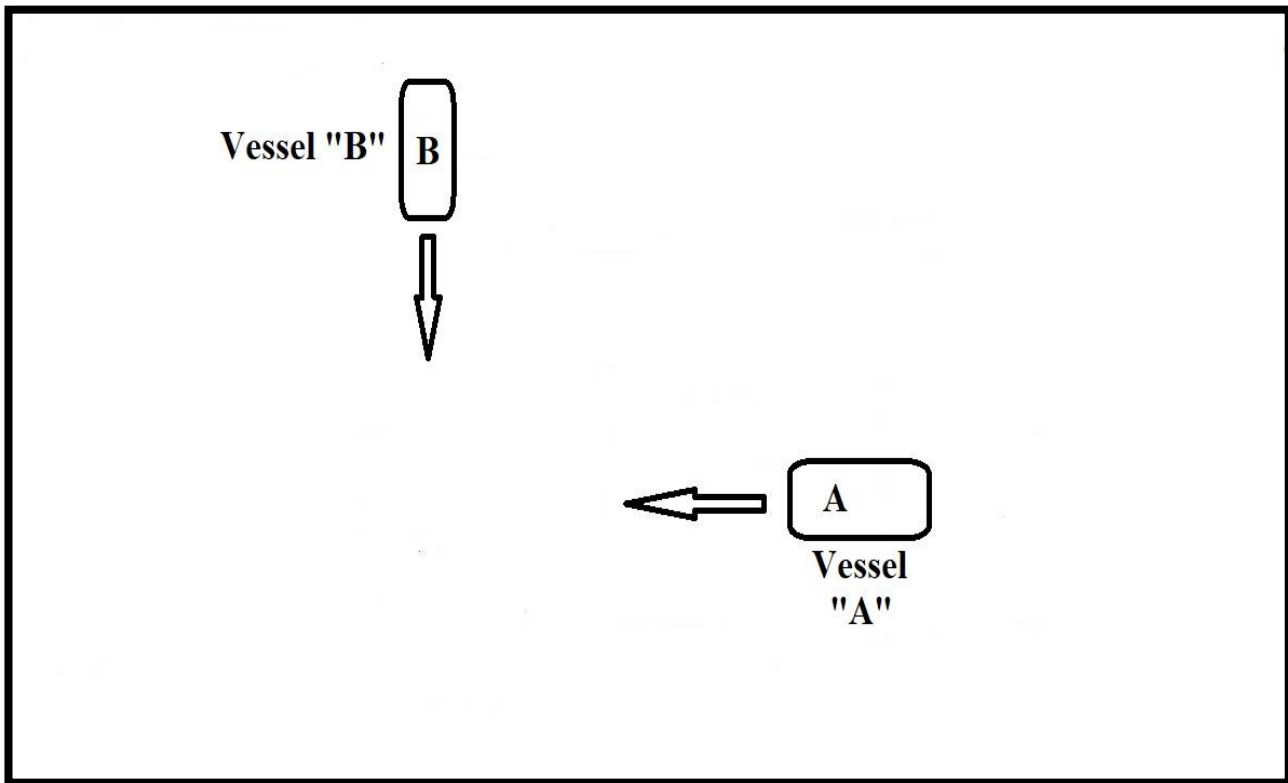
Question 9

(Total 6 marks)

You are the third officer onboard vessel “A” which is a bulk carrier with speed of 14 knots.

Vessel “B” is a container ship **on your Starboard side**, with a speed of 18 knots.

Assessing the situation in the following case indicates that three compass bearings taken, **did not change appreciably and the range is reducing**:



Lecture Notes

- a. Explain the most important responsibilities for **You (Vessel “A”)** when two vessels **are seven (7) miles** from each other. Mention also **which rule** applies. **(3 marks)**

- b. What is the responsibility of vessel “B” at this stage? **(3 marks)**
